

INST# D10018905

83 58

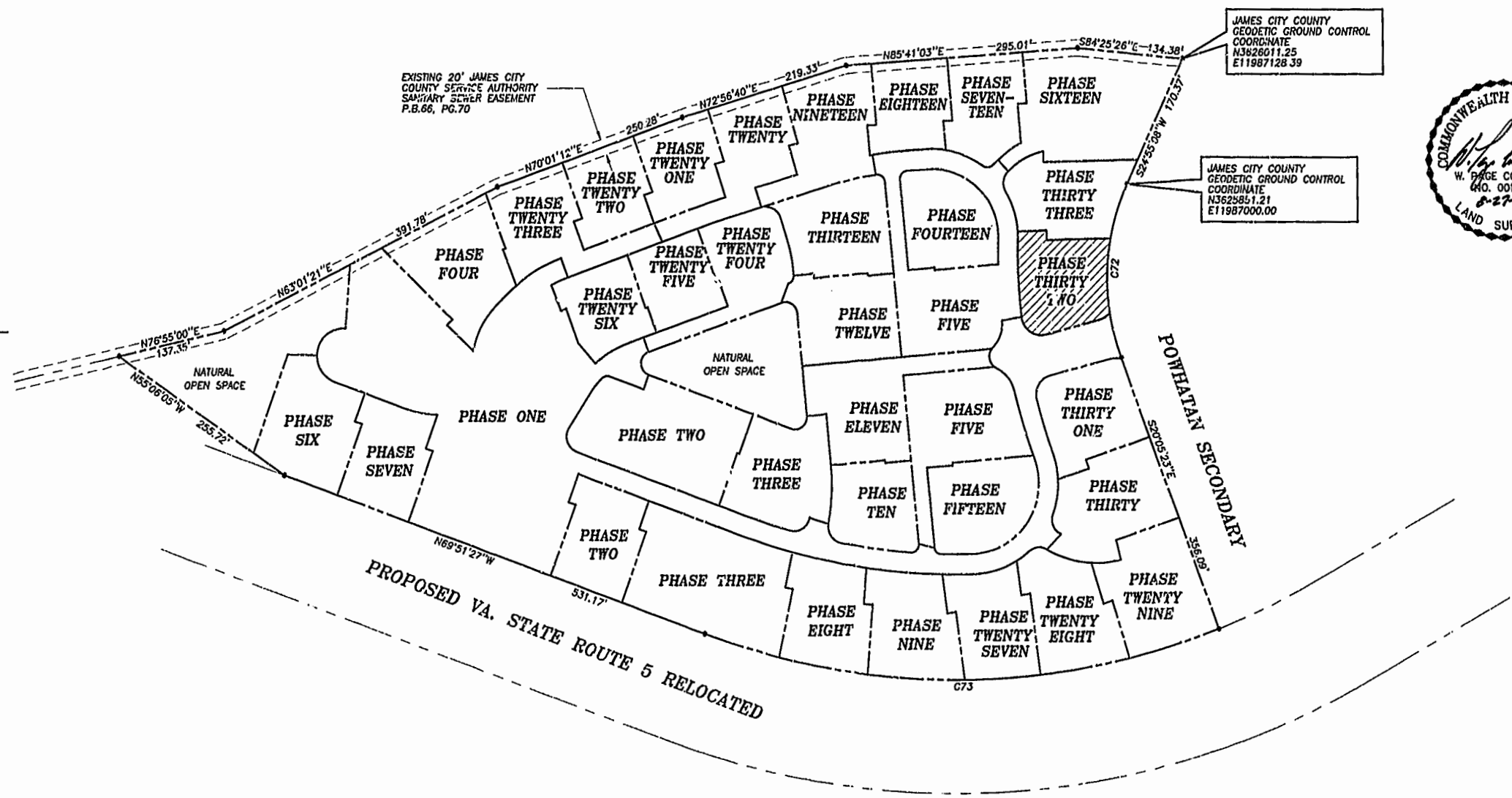
PLAT OF SUBDIVISION
WATERFORD
 AT
POWHATAN SECONDARY
 PHASE THIRTY-TWO
 BERKELEY DISTRICT
 JAMES CITY COUNTY, VIRGINIA

DATE: 10/21/98 SHEET 2 OF 3 SCALE: 1"=100'
 PROJECT NO: 97-008 DRAWN BY: SJB

SA SLEDD & ASSOCIATES, P.C.
 ENGINEERS PLANNERS SURVEYORS
 11832 ROCK LANCING DRIVE, SUITE 203
 NEWPORT NEWS, VIRGINIA 23606
 (757) 873-3386

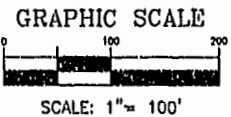
00'32'24"
 JAMES CITY COUNTY
 GEODETIC GROUND CONTROL
 MEMORIAL
 PLAT BOOK 66, PAGE 70

NOW OR FORMERLY
 POWHATAN ENTERPRISES, INC.



CURVE DATA

NUMBER	DELTA	RADIUS	LENGTH	TANGENT	CHORD	CHORD BEARING
C72	45°00'31"	280.00'	219.95'	116.00'	214.34'	S02°24'52"W
C73	41°26'14"	924.91'	668.91'	349.84'	654.43'	S89°25'26"W



City of Williamsburg & County of James City
 Circuit Court: This PLAT was recorded on
 18 Oct 2001
 at 2:35 PM, P.B. 63 PG. 57-59
 DOCUMENT # D10018905
 BETSY B. WOOLRIDGE, CLERK
Betsy Woolridge Dep. Clerk