

"GREENSPRINGS PLANTATION"

46-1-01-0-0001
(DB 322, PG 254)



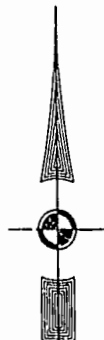
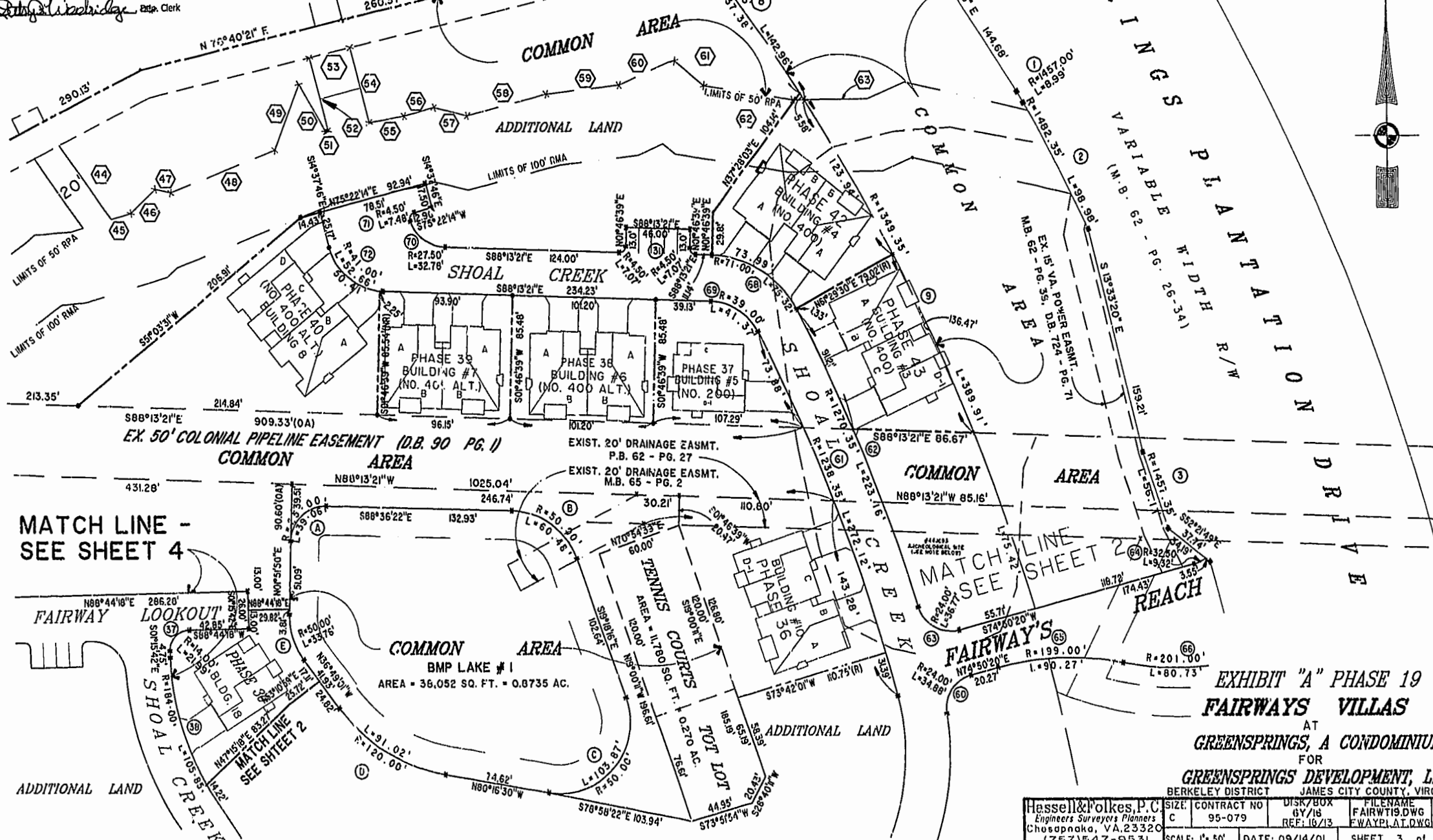
City of Williamsburg & County of James City
Circuit Court, This PLAT was recorded on
21 Sept. 2001
at 3:58 PM, P.B. # 2, PG 36-41
DOCUMENT # 010017054
BETSY B. WOOLRIDGE, CLERK

Betsy B. Woolridge, Esq. Clerk

EXIST. 20' JAMES CITY COUNTY SERVICE
AUTHORITY SAN. SEWER EASEMENT AS
SHOWN IN AS-BUILT LOCATION, D.B. 141 - PG. 388

EXIST. 20' DRAINAGE EASEMENT
M.B. 65 - PG. 2

MATCH LINE - SEE SHEET 5



MATCH LINE - SEE SHEET 4

MATCH LINE - SEE SHEET 2

EXHIBIT "A" PHASE 19 FAIRWAYS VILLAS AT GREENSPRINGS, A CONDOMINIUM FOR

GREENSPRINGS DEVELOPMENT, L.C. BERKELEY DISTRICT JAMES CITY COUNTY, VIRGINIA

| | | | | |
|--|-------------------------------|---------------------------------|--|------|
| Hassell & Folkes, P.C. Engineers Surveyors Planners Chesapeake, VA 23320 (757) 547-9531 | SIZE: CONTRACT NO C 95-079 | DISK/BOX 6Y/16 REF: 16/13 | FILENAME FAIRWT19.DWG FWAYPLAT.DWG | REV. |
| SCALE: 1" = 50' | DATE: 09/14/01 | SHEET 3 of 6 | | |