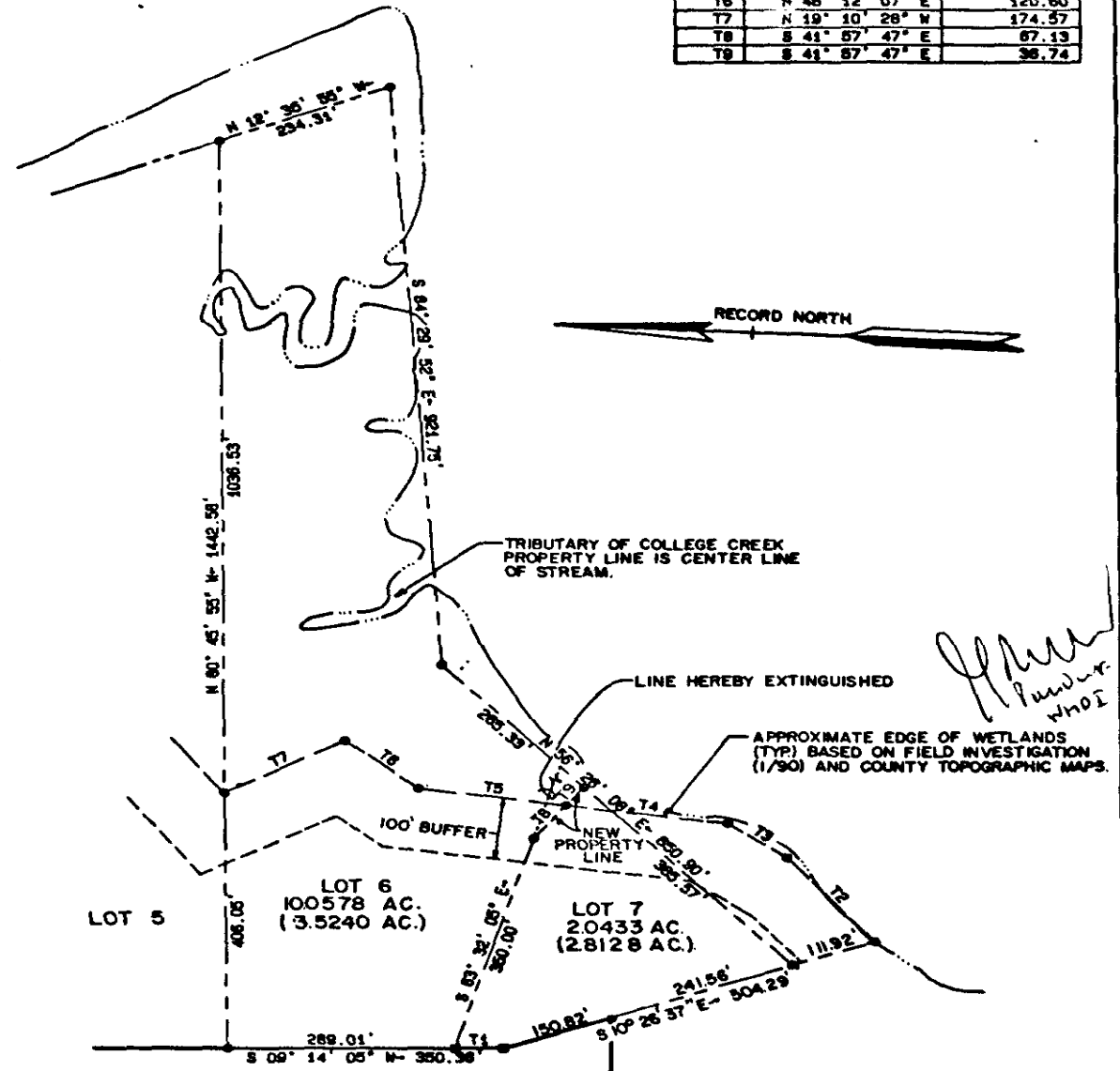


514-623

LABEL	BEARING	DISTANCE
T1	S 09° 14' 05" W	81.35
T2	N 59° 26' 31" E	173.62
T3	N 45° 12' 01" E	92.48
T4	N 17° 18' 40" E	208.53
T5	N 17° 19' 40" E	189.33
T6	N 48° 12' 07" E	120.60
T7	N 19° 10' 28" W	174.57
T8	S 41° 57' 47" E	87.13
T9	S 41° 57' 47" E	36.74



J. J. McDonald
 J. J. McDonald
 WMDI

THE CONSERVANCY VARIABLE WIDTH
 PRIVATE R/W AND DRAINAGE AND
 UTILITIES EASEMENT



AMENDMENT OF LOTS 6 AND 7
 THE CONSERVANCY AT JOCKEY'S NECK
 STANDING IN THE NAME OF
 WESSEX HUNDRED DEVELOPMENT, INC.
 JAMES CITY COUNTY, VIRGINIA
 DATE: 3/26/91 SCALE: 1" = 200'
 LANGLEY and McDONALD, P.C.
 A PROFESSIONAL CORPORATION
 ENGINEERS - PLANNERS - SURVEYORS
 VIRGINIA BEACH & WILLIAMSBURG, VIRGINIA