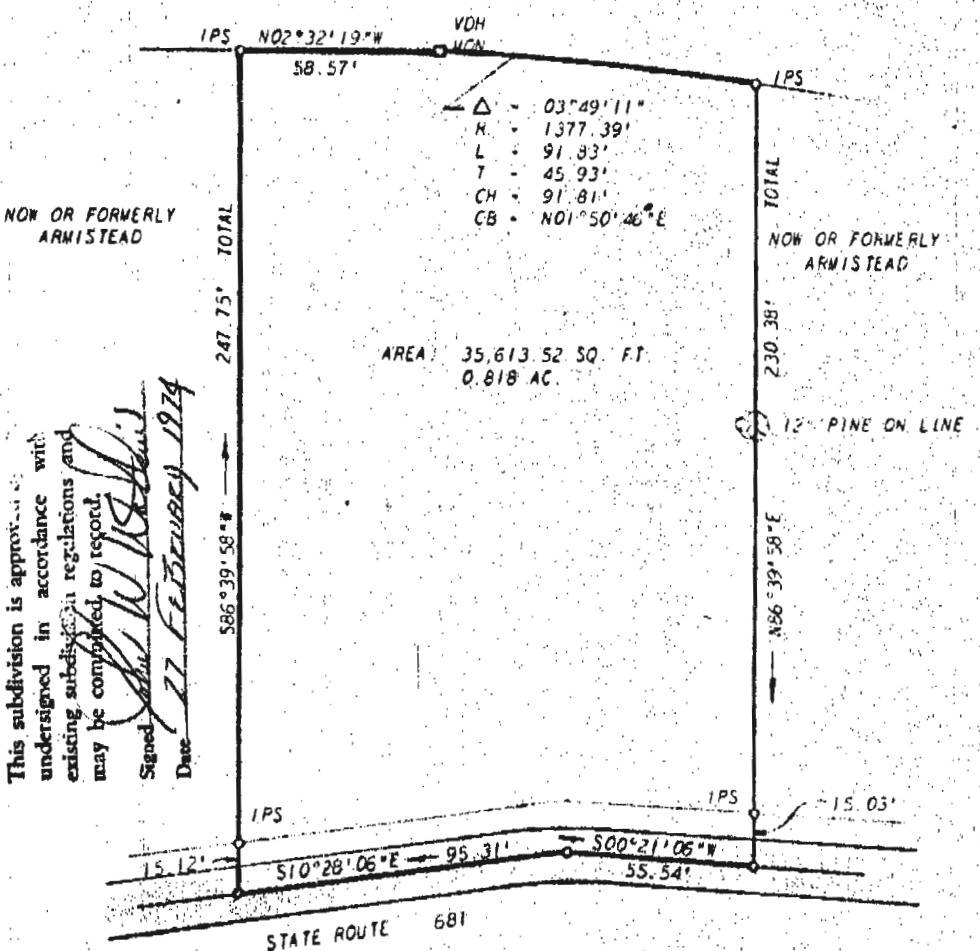
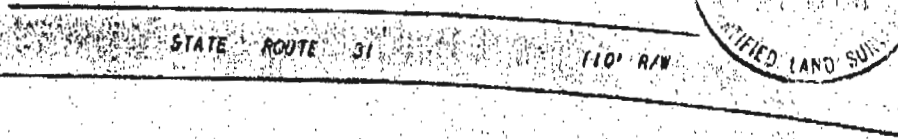
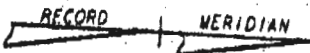


BOOK 150 PAGE 727



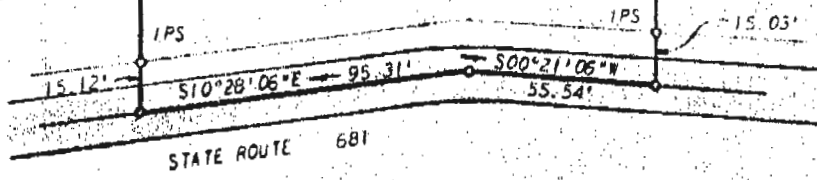
NOW OR FORMERLY ARMISTEAD

NOW OR FORMERLY ARMISTEAD

AREA 35,613.52 SQ. FT. 0.818 AC.

This subdivision is approved in accordance with existing regulations and may be completed to record. Signed [Signature] Date 27 February 1974

12" PINE ON LINE



STATE ROUTE 681

L. V. WOODSON & ASSOCIATES, INC. ENGINEERS, SURVEYORS & PLANNERS, P. O. BOX 633 WILLIAMSBURG, VIRGINIA 23185

LEGEND: IP - IRON PIN, MON - MONUMENT, - - - PROPERTY LINE, - - - CENTERLINE, - - - EASEMENT LINE

A SURVEY OF A PARCEL OF LAND FOR CONVEYANCE TO EDWIN D. MEADE, ET UX LYING IN JAMESTOWN DISTRICT, JAMES CITY COUNTY, VIRGINIA

SCALE: 1"=40' REF: DATE FEBRUARY 6, 1974 AREA 0.818 ACRES

J.O. 1656