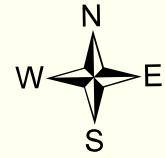




# James City County

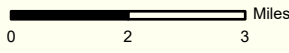
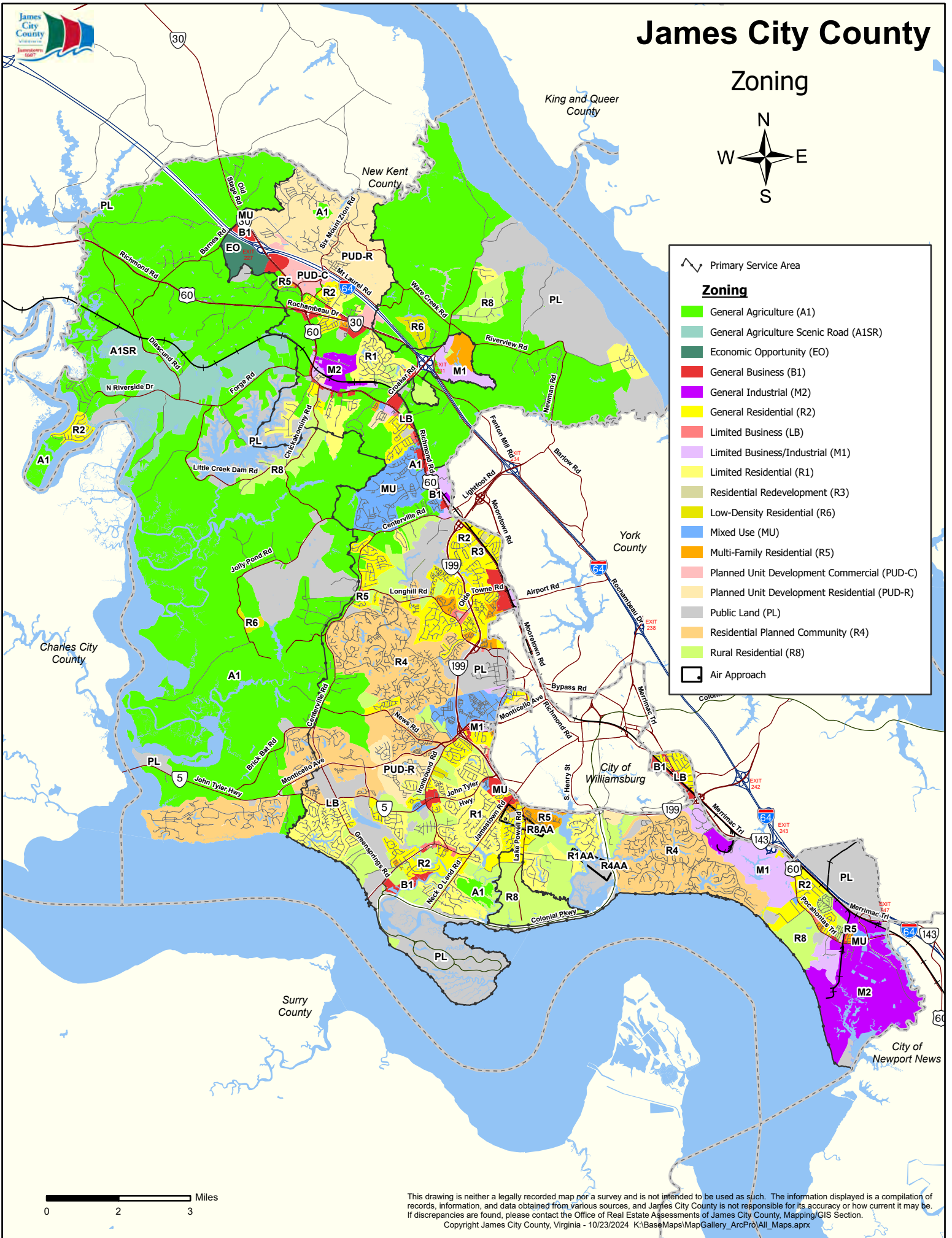
## Zoning



Primary Service Area

**Zoning**

- General Agriculture (A1)
- General Agriculture Scenic Road (A1SR)
- Economic Opportunity (EO)
- General Business (B1)
- General Industrial (M2)
- General Residential (R2)
- Limited Business (LB)
- Limited Business/Industrial (M1)
- Limited Residential (R1)
- Residential Redevelopment (R3)
- Low-Density Residential (R6)
- Mixed Use (MU)
- Multi-Family Residential (R5)
- Planned Unit Development Commercial (PUD-C)
- Planned Unit Development Residential (PUD-R)
- Public Land (PL)
- Residential Planned Community (R4)
- Rural Residential (R8)
- Air Approach



This drawing is neither a legally recorded map nor a survey and is not intended to be used as such. The information displayed is a compilation of records, information, and data obtained from various sources, and James City County is not responsible for its accuracy or how current it may be. If discrepancies are found, please contact the Office of Real Estate Assessments of James City County, Mapping/GIS Section.  
 Copyright James City County, Virginia - 10/23/2024 K:\BaseMaps\MapGallery\_ArcPro\All\_Maps.aprx