

James City County GIS Layers Metadata



Table of Content	1
General Information	2
Layer Created by JCC	3
Agricultural and Forestal District (AFD)	3
Comprehensive Plan	4
County Boundary	5
Drainage Easements	6
Miscellaneous Easements	7
Conservation Easements	8
Geodetic Ground Control Network	9
Golf Courses	10
Marsh	11
Parcels	12
Land Features (Planimetrics)	15
Polling Places	16
Precincts	17
Primary Service Area (PSA)	18
Resource Protection Area and Buffer (RPA)	20
Schools	21
High School Zones	22
Middle School Zones	23
Elementary School Zones	24
Streams	25
Streets	26
Subdivisions	27
Water Features	28
Zoning	29
Layer Not Created by JCC	30
NWBD Watersheds	30
Soils	30
FEMA Flood Hazards	30
2007 Contours	30
Spot Elevations	30

Contact Information:

GIS Supervisor: Kim Hazelwood - 757-253-6654

GIS Analyst: 757-253-6887

James City County Real Estate Assessment Division, Mapping/GIS Section

101-F Mounts Bay Road, P.O. Box 8784

Williamsburg, VA 23187-8784

Facsimile: 757-253-6601

Electronic Mail Address: kim.hazelwood@jamescitycountyva.gov

Hours of Service: 8:00 am - 5:00 pm

Internet Website Address: <http://www.jamescitycountyva.gov/assessments/gis-mapping.html>

Open Data Site Address: <https://opendata-jcc.opendata.arcgis.com/>

Directions to Download from GIS Portal: <https://opendata-jcc.opendata.arcgis.com/items/a87c8ca272644069b58fef1a2a069828>

Distribution Liability:

Although these data have been processed successfully on a computer system at James City County, no warranty expressed or implied is made by James City County regarding the utility of the data on any other system, nor shall the act of distribution constitute any such warranty. No responsibility is assumed by James City County in the use of these data.

Use Constraints:

This data is neither legally recorded nor a survey and is not intended to be used as such. The information displayed is a compilation of records, information, and data obtained from various sources, and James City County is not responsible for its accuracy or how current it may be. If discrepancies are found, please contact the Real Estate Assessment Division of James City County, Mapping/GIS Section.

Attribute Accuracy Report:

James City County makes every reasonable effort to insure the accuracy of the data set. Within the urban areas of the county we strive to have a plus or minus 5 foot accuracy. Out in the rural areas, where sometimes we do not have any recently recorded plats, the accuracy could go higher to almost a plus or minus 20 feet.

Spatial Reference Information:

Projected Coordinate System: NAD 1983 StatePlane Virginia South FIPS 4502 Feet

Projection: Lambert Conformal Conic

Linear Unit: Foot US

Geographic Coordinate System: GCS North American 1983

Datum: D North American 1983

Data Format: ESRI Shapefile (.shp)

Layer Created by JCC

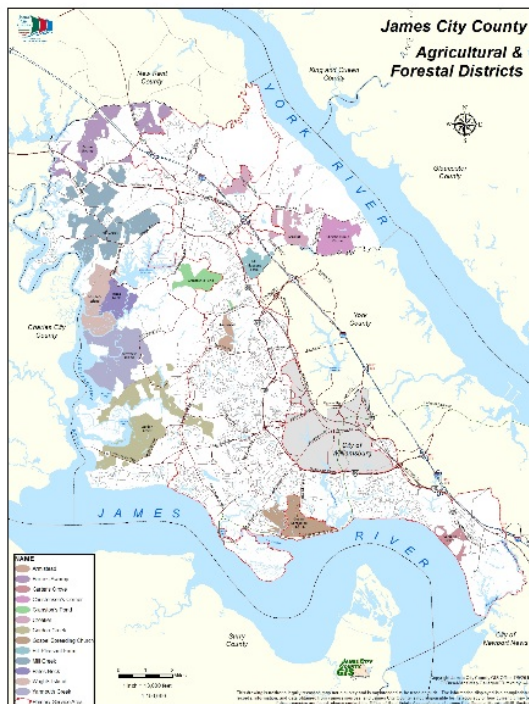
Agricultural and Forestal District (AFD)

Polygon layer to show the parcels that fall into the Agricultural and Forestal District

James City County Community Development provided criteria for this layer

Fields

PIN	Parcel Identification Number
AFD	Name of AFD + Code
NAME	Case Name
Code	A series of text to identify the feature by



Visit JCC's Open Data Site to download this layer. The link is provided below

[AFD Data Download](#)

To view or download a map with this layer, use the link below.

[AFD Map Download](#)

Questions? Contact Community Development

planning@jamescitycountyva.gov

757-253-6685

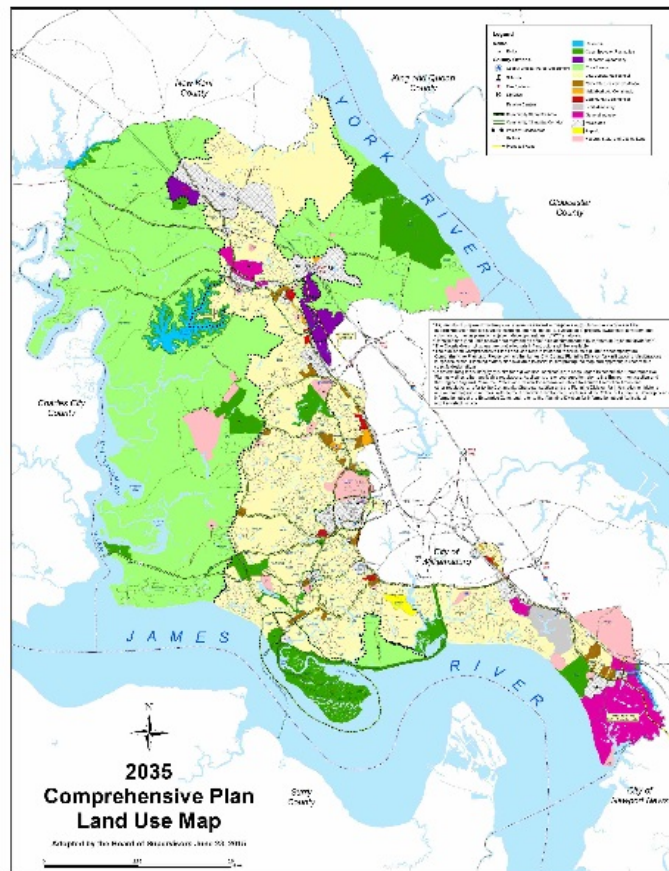
Comprehensive Plan

Polygon layer displaying the 2035 Comprehensive Plan

James City County Community Development provided criteria for this layer

Fields

CODE_DEFIN	Description of Code
Acres	The amount of acres in the feature
CODE	Code that is comprised of text to identify to individual area



Visit JCC's Open Data Site to download this layer. The link is provided below

[Comprehensive Plan 2035 Data Download](#)

To view or download a map with this layer, use the link below.

[Comprehensive Plan 2035 Map Download](#)

Questions? Contact Community Development

planning@jamescitycountyva.gov

757-253-6685

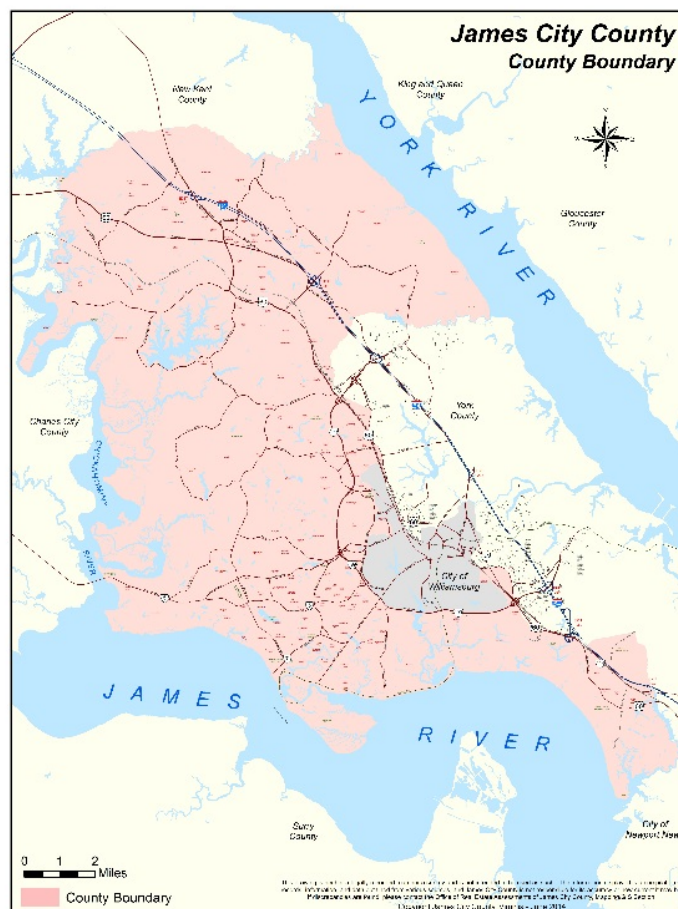
County Boundary

Polygon layer displaying the political boundary of James City County

This layer is a compilation of records, information, and data obtained from various sources

Fields

County	County name
Acres	The amount of acres in the feature
CountyCode	Code for county boundary



Visit JCC's Open Data Site to download this layer. The link is provided below

[County Boundary Data Download](#)

Questions? Mapping Department

RealEstate.Assessments@jamescitycountyva.gov

757-253-6654

Drainage Easements

Polygon layer displaying the drainage easements of James City County

This layer is a compilation of records, information, and data obtained from various sources

Fields

Code	Private or Public Drainage Easement
Plat	Land records associated with the Easement
Notes	Notes about the Easement
JCC	Whether or not the easement is dedicated to JCC



Visit JCC's Open Data Site to download this layer. The link is provided below

[Drainage Easements Data Download](#)

Questions? Contact Community Development

planning@jamestownva.gov

757-253-6685

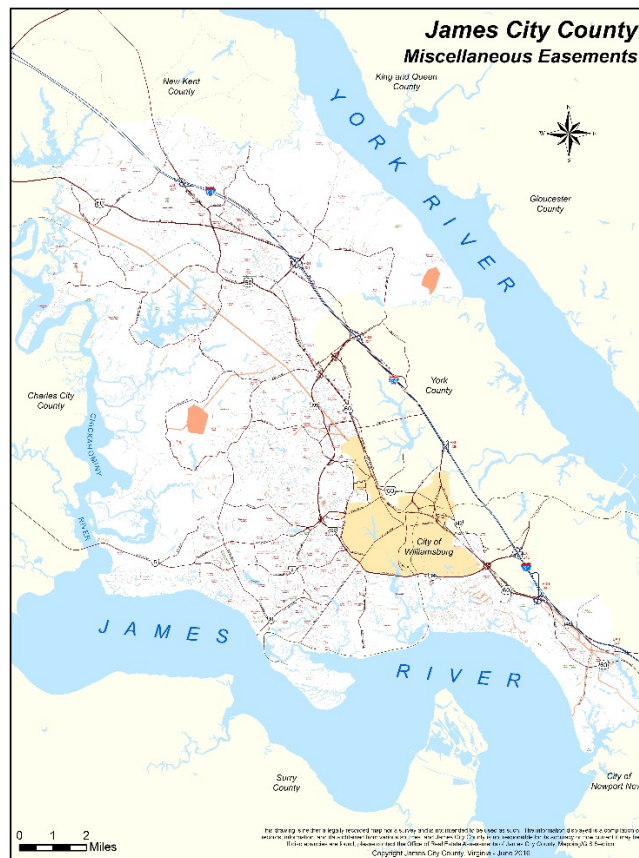
Miscellaneous Easements

Polygon layer displaying Access, BMP, Dam, Landscape, Sidewalk, Slope, Stormwater, Utility, Miscellaneous, VDOT, Va Power Easements among others

This layer is a complication of records, information, and data obtained from various sources

Fields

Code	Access, BMP, Dam, Landscape, Sidewalk, Slope, Stormwater, Utility, Miscellaneous, VDOT, Va Power Easements among others
Plat	Land records associated with the Easement
Notes	Notes about the Easement
JCC	Whether or not the easement is dedicated to JCC



Visit JCC's Open Data Site to download this layer. The link is provided below

[Miscellaneous Easements Data Download](#)

Questions? Contact Community Development

planning@jamescitycountyva.gov

757-253-6685

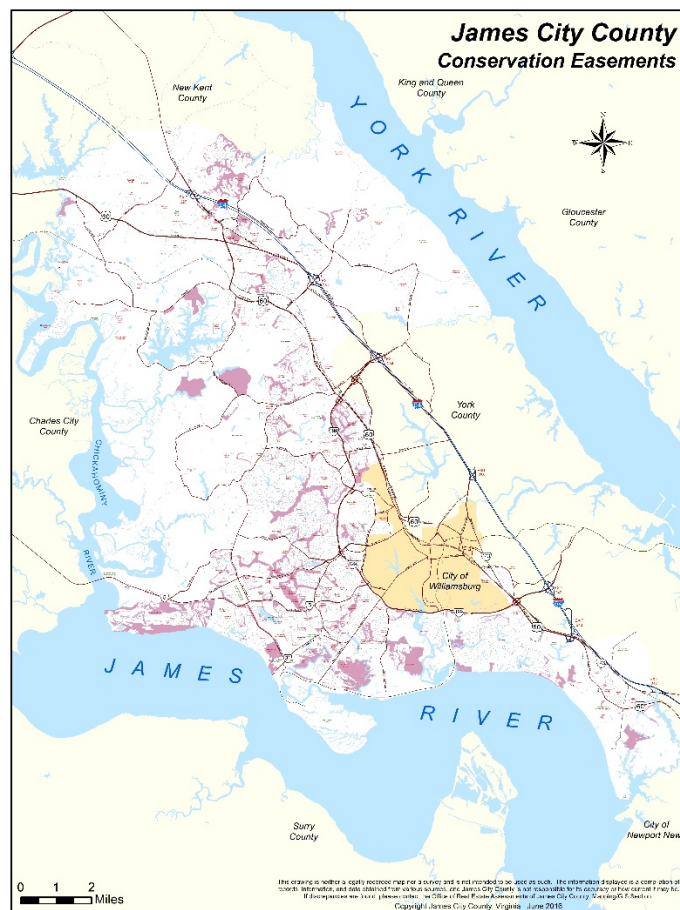
Conservation Easements

Polygon layer displaying Conservation, Open Space, Greenway, and Scenic Easements

This layer is a compilation of records, information, and data obtained from various sources

Fields

Code	Conservation, Open Space, Greenway, and Scenic Easements
Plat	Land records associated with the Easement
Notes	Notes about the Easement
JCC	Whether or not the easement is dedicated to JCC



Visit JCC's Open Data Site to download this layer. The link is provided below

[Conservation Easements Data Download](#)

Questions? Contact Community Development

planning@jamestowncitycountyva.gov

757-253-6685

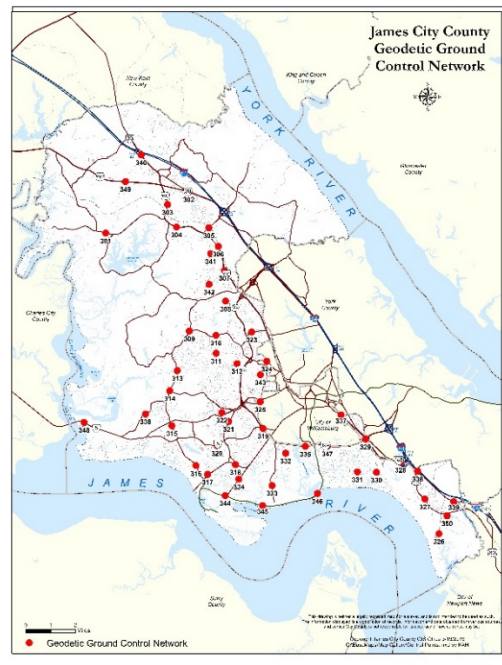
Geodetic Ground Control Network

Point layer displaying the 1990 geodetic ground control network

This layer is a compilation of records, information, and data obtained from surveyors, engineers, and planners

Fields

CONTROL83A	Unique ID
CONTROL8_1	Station number
X	Easting coordinate for the Virginia State Plane South (NAD83) coordinate system
Y	Northing coordinate for the Virginia State Plane South (NAD83) coordinate system
Elevation	Elevation in feet
LatDD	Latitude in Decimal Degrees
Long DD	Longitude in Decimal Degrees
Lat DMS	Latitude in Degrees Minutes Seconds
Long DMS	Longitude in Degrees Minutes Seconds



Visit JCC's Open Data Site to download this layer. The link is provided below

[Geodetic Ground Control Network Data Download](#)

For more information on this layer please see the link to more metadata

[Geodetic Ground Control Metadata PDF](#)

To view or download a map with this layer, use the link below.

[Geodetic Ground Control Network Map Download](#)

Questions? Contact Community Development

planning@jamestownva.gov

757-253-6685

Golf Courses

This is a polygon layer derived from aerial images of the county

This layer has been created by the Mapping Department

Fields

COURSE	Name of Golf Course
Hole	Hole number
Course2	Alternate name of Golf Course
Acres	Acres of that particular hole
Feature_Type_1	The type of material the polygon represents
Info	When the polygon was created/edited



Visit JCC's Open Data Site to download this layer. The link is provided below

[Golf Course Data Download](#)

Questions? Contact the Mapping Department
RealEstate.Assessments@jamescitycountyva.gov
757-253-6654

Marsh

Polygon layer displaying the marsh areas derived from the 2007 Orthophotography Digital Terrain Model

This layer has been created by the Mapping Department

This layer does not have Custom Fields



Visit JCC's Open Data Site to download this layer. The link is provided below

[Marsh Data Download](#)

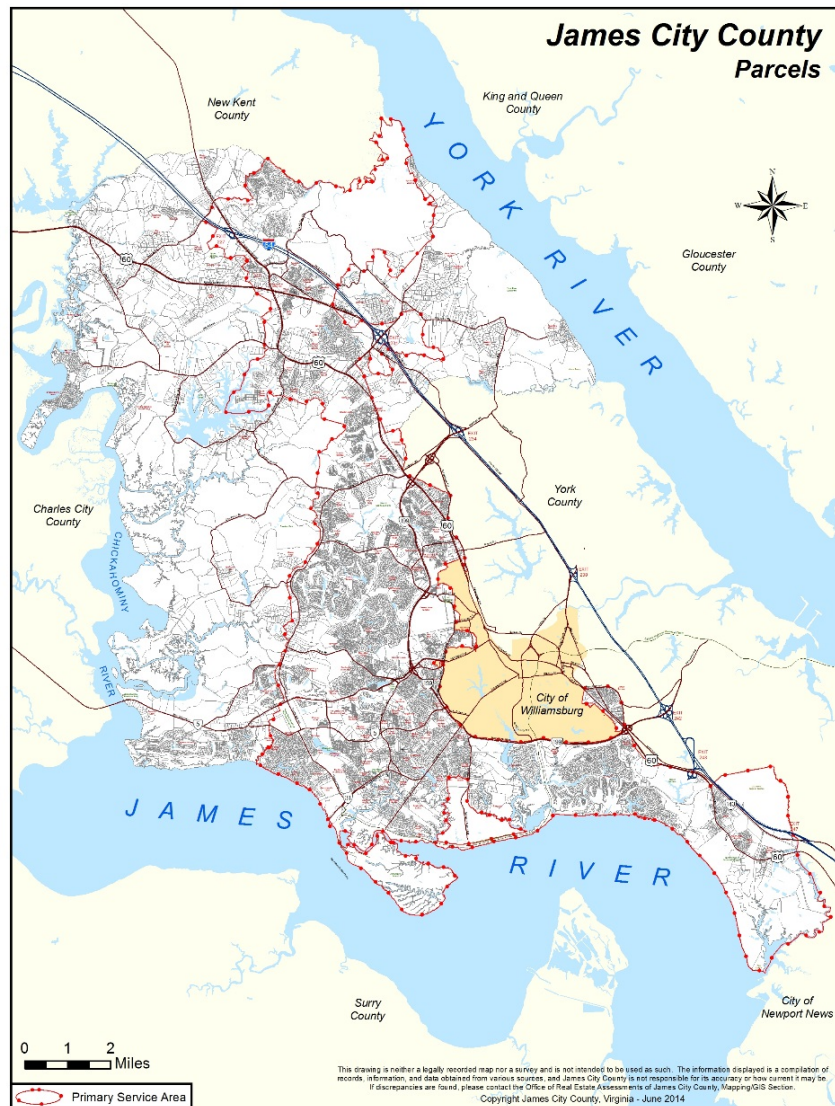
Questions? Contact the Mapping Department
RealEstate.Assessments@jamescitycountyva.gov

757-253-6654

Parcels

Property polygons and data for parcels showing property boundaries and information for each parcel

This layer is a compilation of records, information, and data obtained from various sources



Please see the link below for Parcel Metadata

[Parcel Metadata Download](#)

Visit JCC's Open Data Site to download this layer. The link is provided below

[Parcel Data Download](#)

To view or download a map with this layer, use the link below.

[Parcel Map Download](#)

Questions? Contact Real Estate Assessments Office

RealEstate.Assessments@jamescitycountyva.gov

757-253-6650

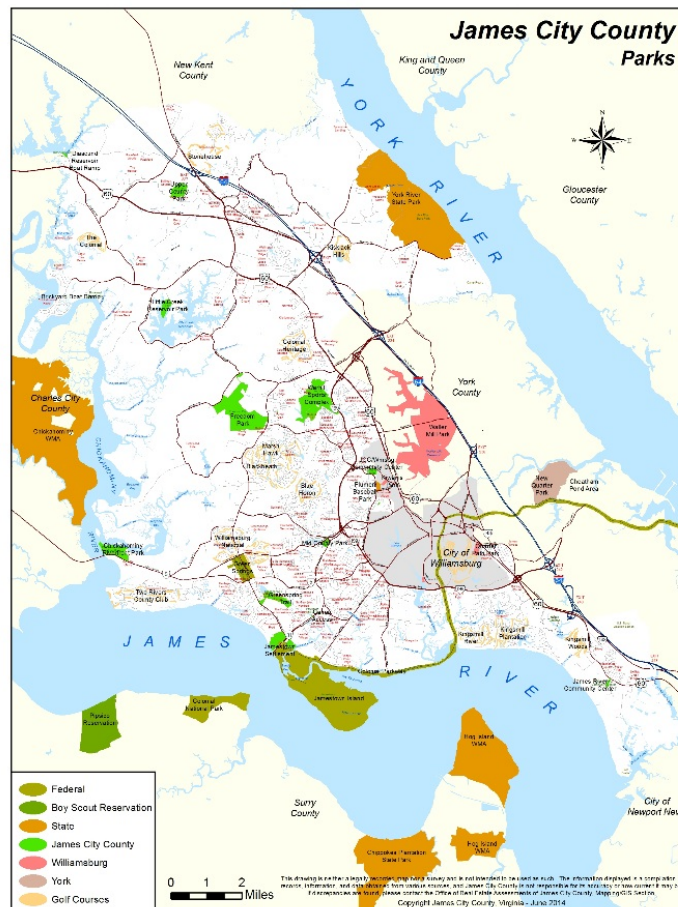
Parks

Polygon layer displaying parks and recreation land in and around James City County

This layer is a compilation of records, information, and data obtained from various sources

Fields

Name	Name of the Park
FIRST_OWNER1	Owner of the Park



Visit JCC's Open Data Site to download this layer. The link is provided below

[Parks Data Download](#)

To view or download a map with this layer, use the link below.

[Parks Map Download](#)

Questions? Contact Parks and Recreation

parks.rec@jamescitycountyva.gov

757-259-5410

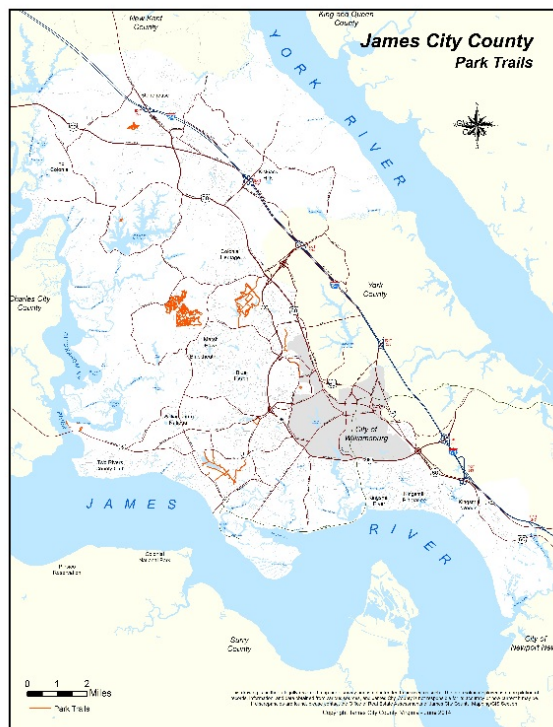
Parks Trails

Line layer displaying park trails in James City County created from aerial photography

This layer is a compilation of records, information, and data obtained from various sources and is continuously updated every 2 years

Fields

Name	Named by its use
miles	Miles of trail
Location	Where the trail is located
Surface	Material of trail
Width	Width of trail
Active	Active "Yes" or "No"
RuleID	Internal use
PLAINST	Plain Street the trail falls within
Type	The type of trail



Visit JCC's Open Data Site to download this layer. The link is provided below

[Park Trails Data Download](#)

To view or download a map with this layer, use the link below.

[Park Trails Map Download](#)

Questions? Contact Parks and Recreation

parks.rec@jamescitycountyva.gov

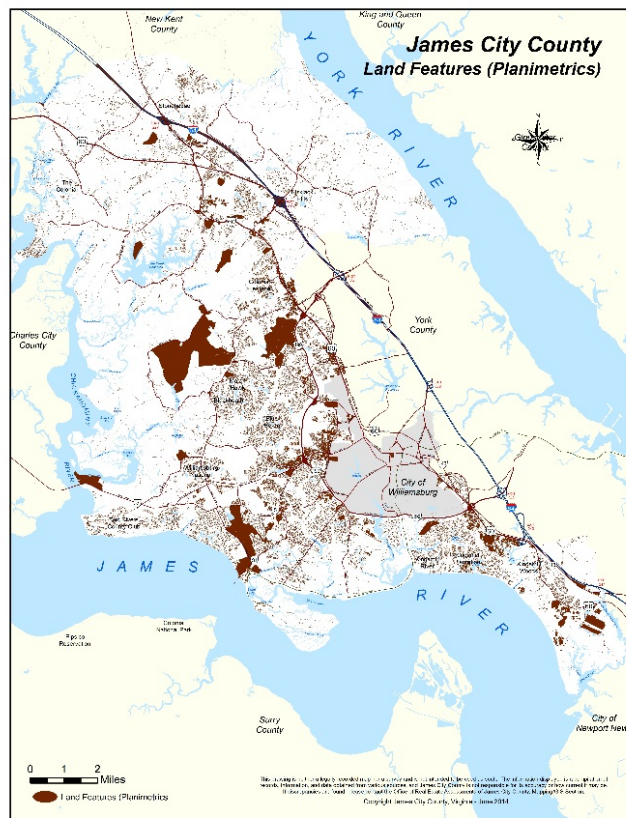
757-259-5410

Land Features (Planimetrics)

Polygon layer displaying the Land and Buildings derived from the most recent Aerial Imagery
Features are continuously updated

Fields

Feature	Land or Building
Detail	Detailed description of the feature
Impervious	If fluid can pass through it
Location	Location of the feature
Bldg_Code	Column used for internal purposes
General_Services	Column used for internal purposes
GS_Notes	Additional information for the feature
Acres	Column used for internal purposes
Fire_Mapbook	Column used for internal purposes
GS_Asset_Code	Column used for internal purposes
GIS_UID	Unique Identifier



Visit JCC's Open Data Site to download this layer. The link is provided below

[Land Features \(Planimetrics\) Data Download](#)

[Questions?](#) Contact the Mapping Department
RealEstate.Assessments@jamescitycountyva.gov

757-253-6654

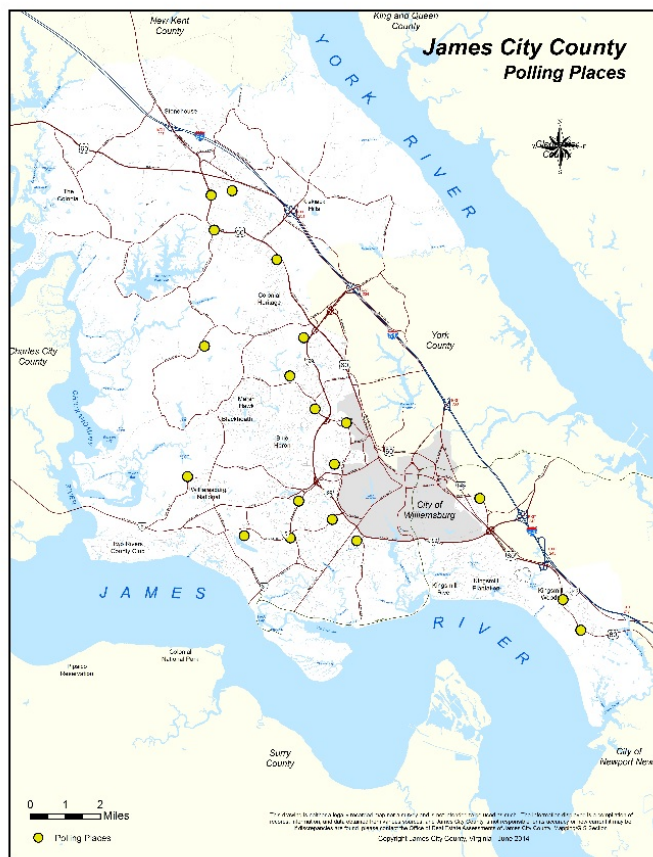
Polling Places

Point layer showing the polling locations for James City County precincts

This layer is a created from information from Voter Registration

Fields

NAME	Name of Poll site
PRECINCT	Precint the Polling place belongs to
CODE	Code for Poll Site
Prect_Num	Code for Precinct Site
District	District the Poll Site resides in



Visit JCC's Open Data Site to download this layer. The link is provided below

[Polling Places Data Download](#)

Questions? Contact Voter Registration

vote@jamescitycountyva.gov

757-259-4949

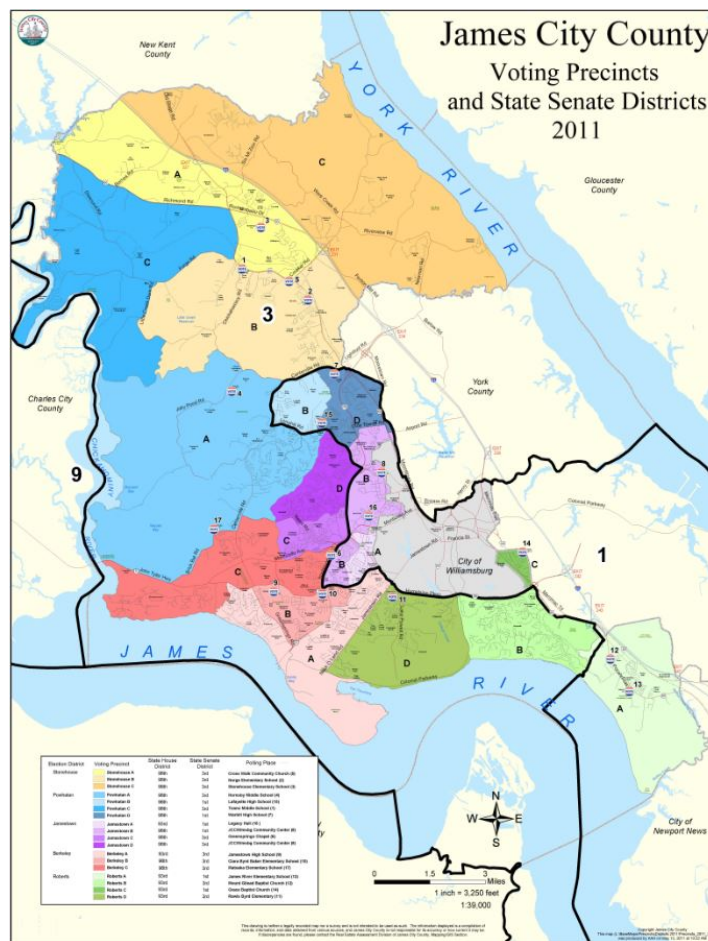
Precincts

Polygon layer showing the locations of voting precincts for James City County

This layer is a created from information from Voter Registration

Fields

CODE	Code for Precinct Polygon
Precinct_number	Number to identify each Precinct
Precinct_Name	The name of the Precinct
Polling_Pl	The polling site in that polygon



Visit JCC's Open Data Site to download this layer. The link is provided below

[Precinct Data Download](#)

To view or download a map with this layer, use the link below.

[Precinct Map Download](#)

Questions? Contact Voter Registration

vote@jamescitycountyva.gov

757-259-4949

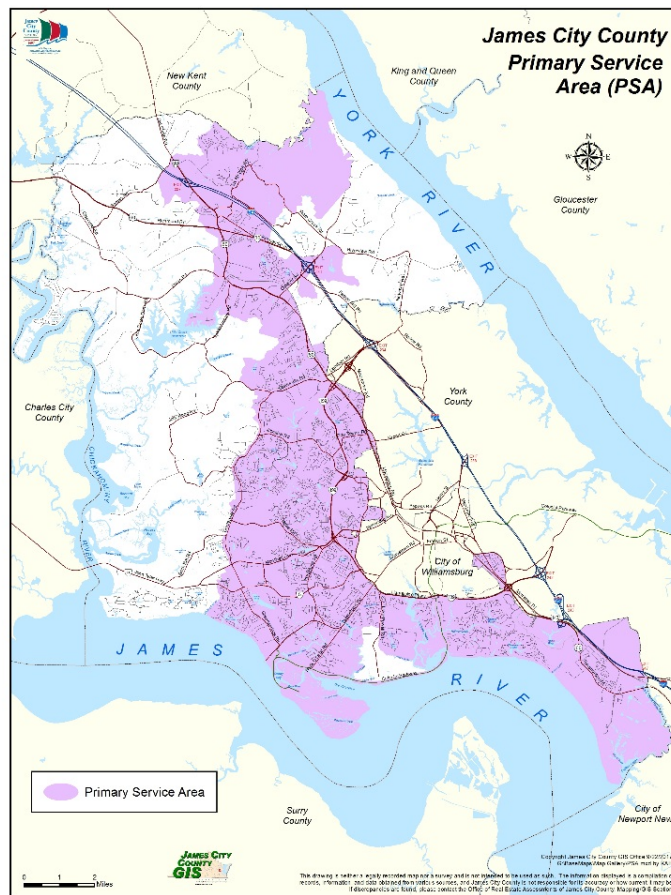
Primary Service Area (PSA)

Polygon layer displaying the Primary Service Area (PSA). The James City County Board of Directors has authorized water and sewer operations for the James City Sewer Authority (JCSA) within the PSA in the County

This layer is a compilation of records, information, and data obtained from various sources

Fields

CODE	Whether it is a Primary Service Area or not
------	---



Visit JCC's Open Data Site to download this layer. The link is provided below

[Primary Service Area Data Download](#)

To view or download a map with this layer, use the link below.

[Primary Service Area Map Download](#)

Questions? Contact JCSA

jcsa@jamestowncityva.gov

757-253-6800

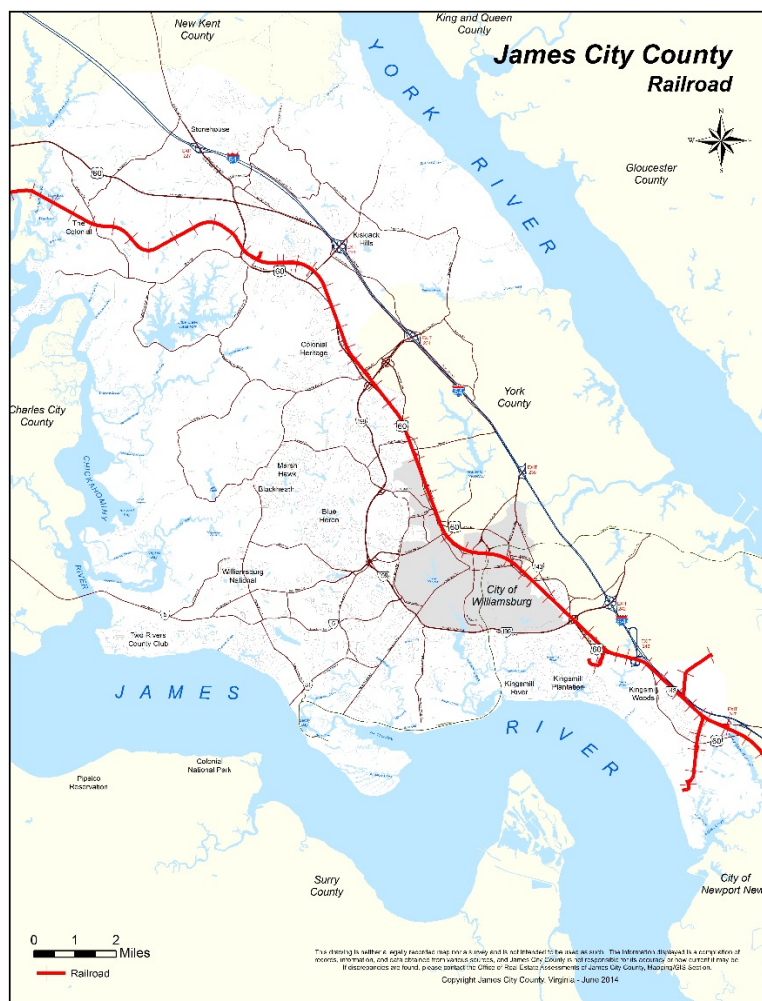
Railroad

Line layer showing the centerline of railroad tracks

Derived from most recent Orthophotography

Fields

Name	A particular track is referred to as this code
Locality	The County it resides within
Tracks	Used for internal purposes
Class	Used for internal purposes



Visit JCC's Open Data Site to download this layer. The link is provided below

[Railroad Data Download](#)

Questions? Contact the Mapping Department
RealEstate.Assessments@jamescitycountyva.gov

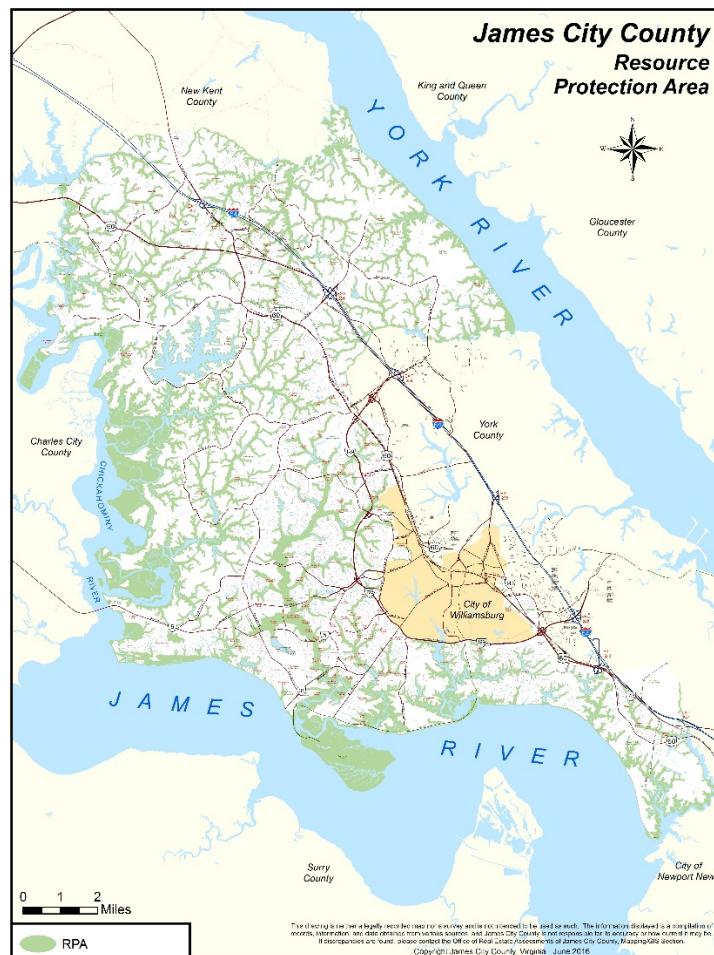
757-253-6654

Resource Protection Area and Buffer (RPA)

Polygon layer showing the extents of the Resource Protection Area (RPA) and 100-foot buffer. Environmental features that play a vital role in James City County's effort to Protect the Chesapeake Bay, as well as a 100-foot buffer area adjacent to and extending landward from them, are protected by the County's Chesapeake Bay Preservation Ordinance

This layer is maintained by the Community Development Department

Fields – Attribution is not provided in this layer



Visit JCC's Open Data Site to download this layer. The link is provided below

[Resource Protection Area \(RPA\) Data Download](#)

Questions? Contact the Community Development Department

planning@jamescitycountyva.gov

757-253-668

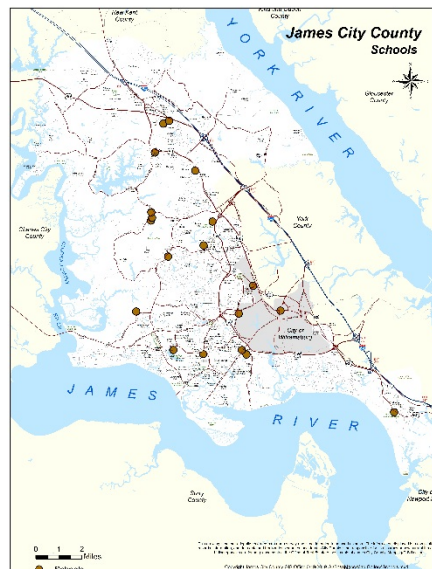
Schools

Point layer showing the locations of the Williamsburg-James City County public schools

The WJCC School Board provided criteria for this layer

Fields

Name	Name of the school
SOURCETHM	Internal Use
code	Internal Use
code2	Internal Use
Location	City or County
rotate	Internal Use
ADDR	Address of the school
CITY	The City the school is located in
STATE	The State the school is located in
ZIP	The zip boundary the school is located in
Code_1	Internal Use
Label	Internal Use
Code3	Internal Use
PAZ_Code	Internal Use
Shelter	Denotes if this school is a shelter
PAZ	Internal Use



Visit JCC's Open Data Site to download this layer. The link is provided below

[Schools Data Download](#)

Questions? Contact The WJCC School Board

757-603-6400

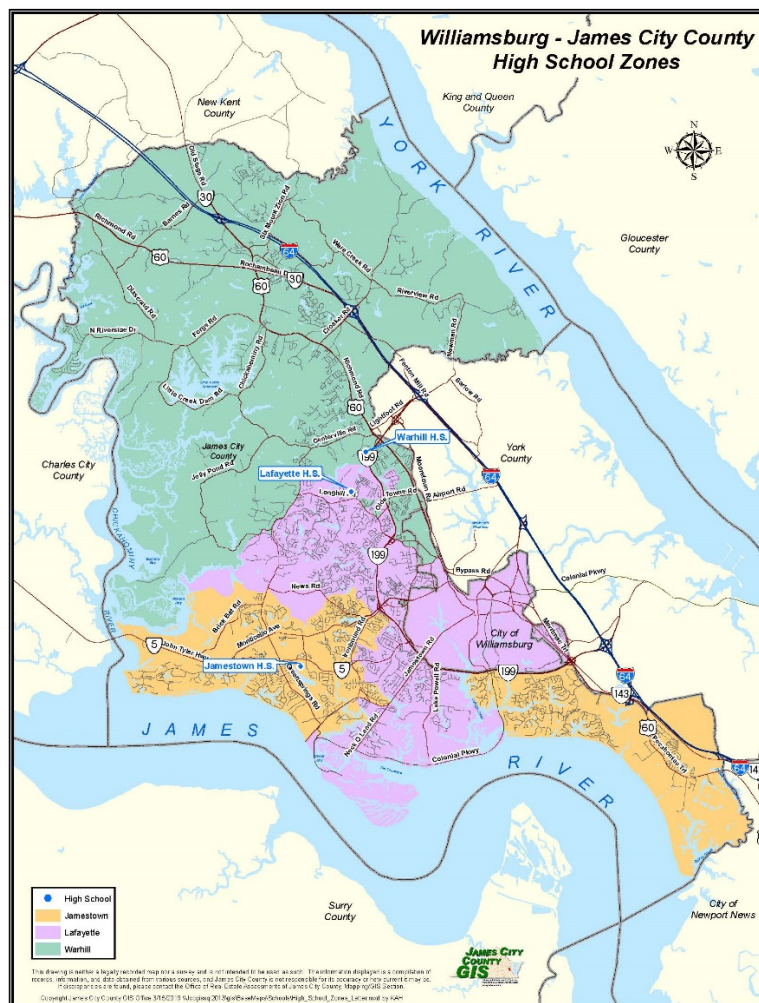
High School Zones

Polygon layers showing the high school districts of the Williamsburg-James City County public school system

The WJCC School Board provided criteria for this layer

Fields

Name	Name of the school zone
Code	Code of the school zone



Visit JCC's Open Data Site to download this layer. The link is provided below

[High School Zones Data Download](#)

To view or download a map with this layer, use the link below.

[High School Zones Map Download](#)

Questions? Contact The WJCC School Board

757-603-6400

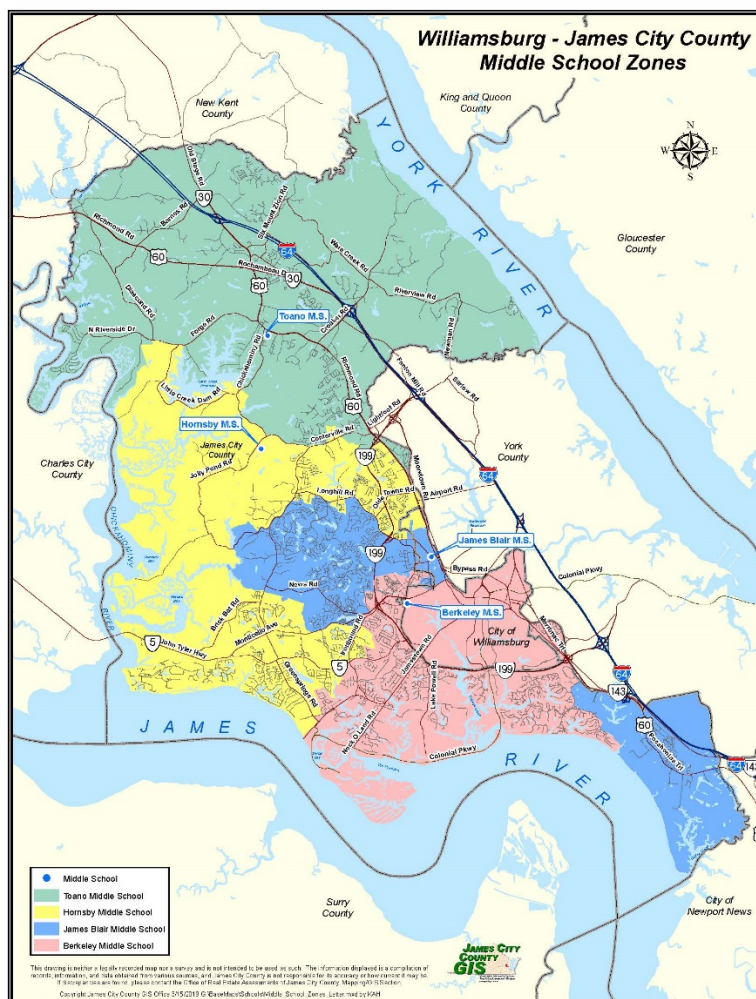
Middle School Zones

Polygon layers showing the middle school districts of the Williamsburg-James City County public school system

The WJCC School Board provided criteria for this layer

Fields

Name	Name of the school zone
Code	Code of the school zone



Visit JCC's Open Data Site to download this layer. The link is provided below

[Middle School Zones Data Download](#)

To view or download a map with this layer, use the link below.

[Middle School Zones Map Download](#)

Questions? Contact The WJCC School Board

757-603-6400

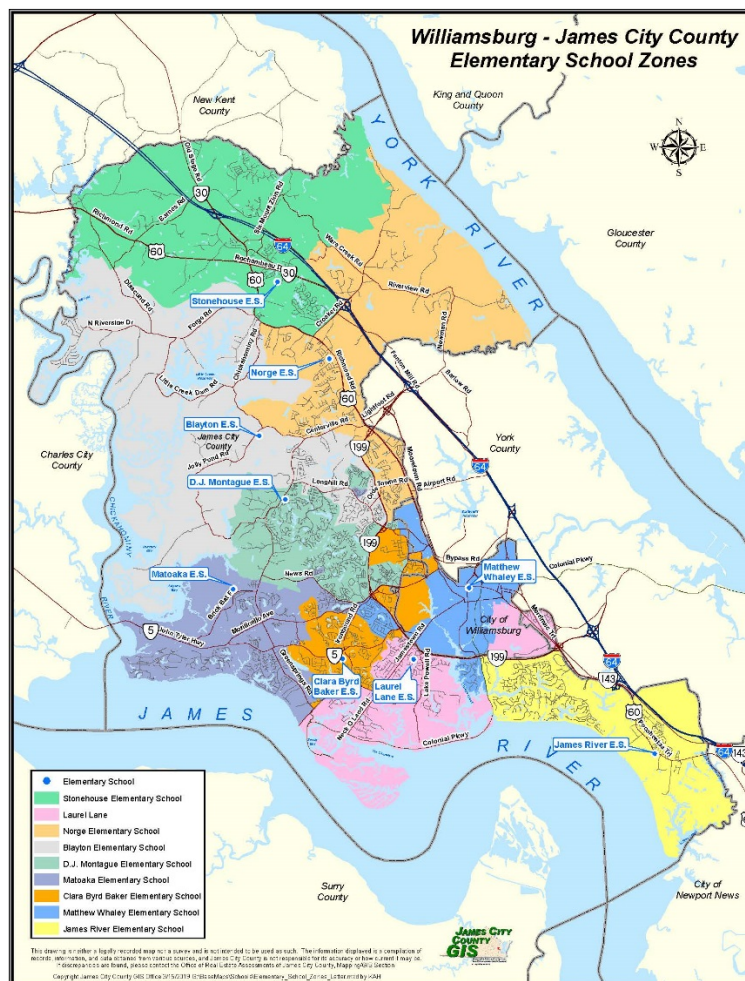
Elementary School Zones

Polygon layers showing the elementary districts of the Williamsburg-James City County public school system

The WJCC School Board provided criteria for this layer

Fields

Name	Name of the school zone
Code	Code of the school zone



Visit JCC's Open Data Site to download this layer. The link is provided below

[Elementary School Zones Data Download](#)

To view or download a map with this layer, use the link below.

[Elementary School Zones Map Download](#)

Questions? Contact The WJCC School Board

757-603-6400

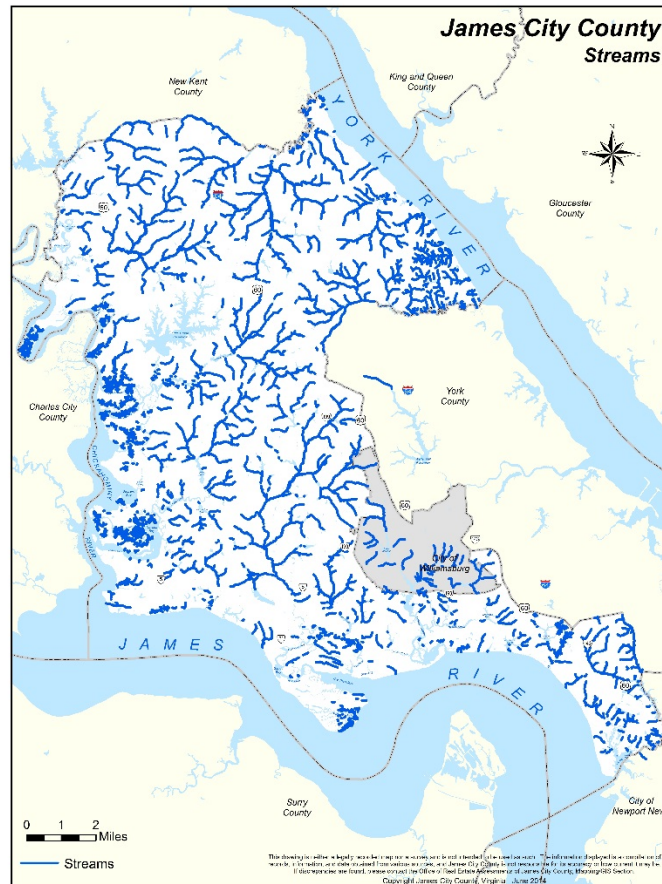
Streams

Line layer displaying the streams derived from the 2007 Orthophotography Digital Terrain Model. The layer is continuously updated every 2 years

GIS information was created from aerial photography

Fields

Name	Name of streams
Code	Defines whether is a Perennial or Intermittent Stream
Alias	Contains more information of the location of the stream



Visit JCC's Open Data Site to download this layer. The link is provided below

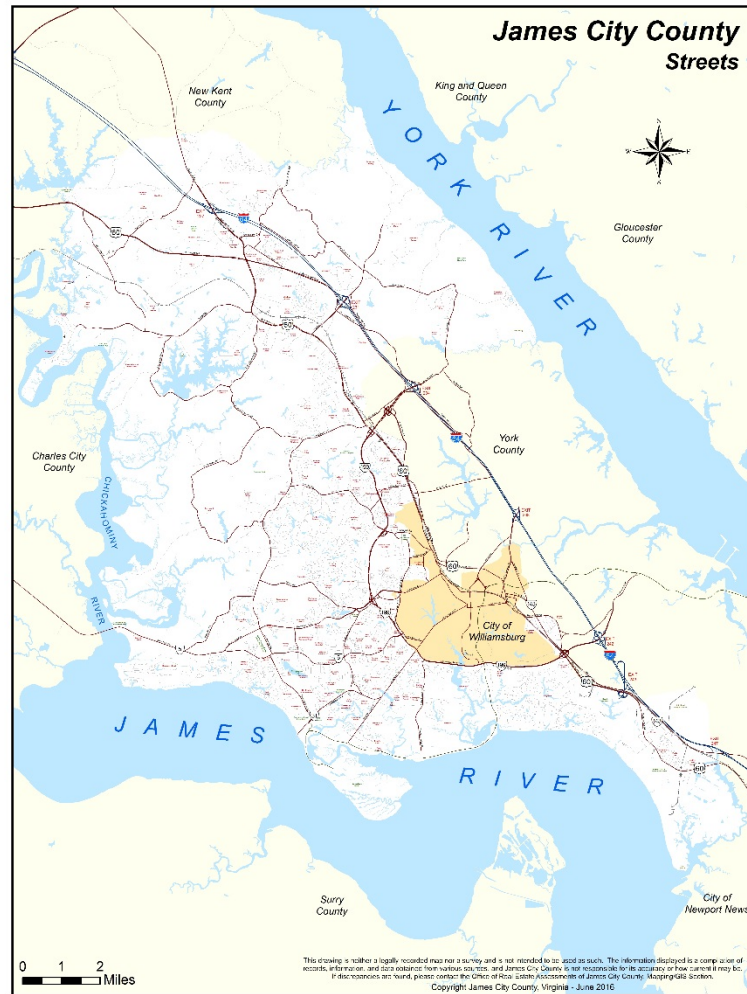
[Streams Data Download](#)

[Questions?](#) Contact The Mapping Department
RealEstate.Assessments@jamescitycountyva.gov
757-603-6400

Streets

Line layer displaying the street centerlines for James City County and some surrounding areas

This layer is a compilation of records, information, and data obtained from various sources



Please see the link below for Streets Metadata

[Streets Metadata Download](#)

Visit JCC's Open Data Site to download this layer. The link is provided below

[Streets Data Download](#)

Questions? Contact The Community Development Department

planning@jamescitycountyva.gov

757-253-6685

Subdivisions

Polygon layer derived from combining parcels that share the same neighborhood

The boundaries are defined by the JCC Parcel Layer

Fields

NAME	Name of Subdivision
Prop_Type	Type of property
GIS Comments	Comments for the Mapping Department
Precinct	Precinct the subdivision falls in
District	District the subdivision falls in
Leaf_Collection	Data for Leaf collection
acres	How many acres the subdivision has
Fire District	Fire District name



Visit JCC's Open Data Site to download this layer. The link is provided below

[Subdivision Data Download](#)

To view or download a map with this layer, use the link below.

[Subdivision Map Download](#)

Questions? Contact The Community Development Department

planning@jamescitycountyva.gov

757-253-6685

Water Features

GIS information was created from aerial photography

The layer is continuously updated every 2 years

Fields

NAME	Name of water feature
Code	Identifier/Code given to the waterbody
JCC	Is given a "Yes" if it falls inside of JCC
Tidal	"Yes" or "No"
Sq_Miles	Square miles of the water body



Visit JCC's Open Data Site to download this layer. The link is provided below

[Water Features Data Download](#)

Questions? Contact The Mapping Department
RealEstate.Assessments@jamescitycountyva.gov

757-603-6400

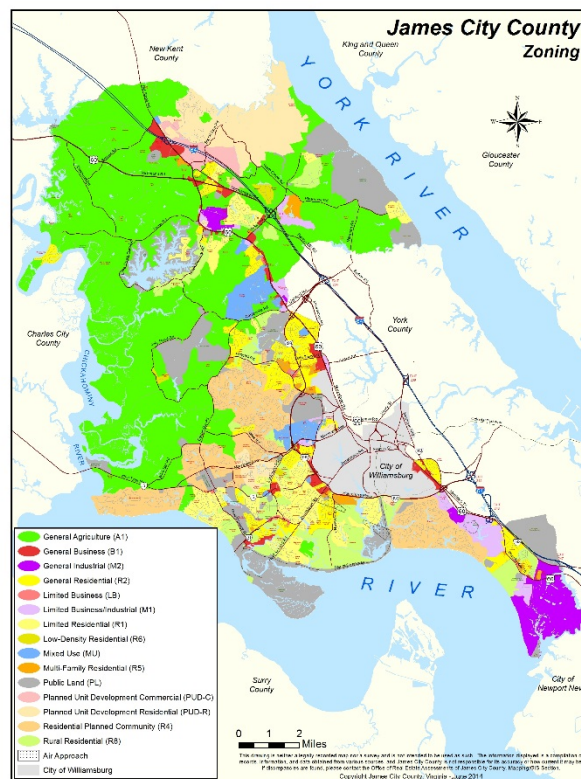
Zoning

Polygon layer displaying the zoning classifications in the county

The James City County Community Development Department provided criteria for this layer

Fields

CODE	Zoning Codes
Description	Descriptions of the Zoning Codes
Count_	Is given a "Yes" if it falls inside of JCC
Food_Truck	"Yes" or "No"



Visit JCC's Open Data Site to download this layer. The link is provided below

[Zoning Data Download](#)

To view or download a map with this layer, use the link below.

[Zoning Map Download](#)

Questions? Contact The Community Development Department

planning@jamestownva.gov

757-253-66

Layer Not Created by JCC

NWBD Watersheds

NWBD layer please refer to the NWBD web site: <http://www.dcr.virginia.gov/soil-and-water/hu>

Soils

All Soil data layers were created and are maintained by the U.S. Department of Agriculture, Natural Resources Conservation Service. Data can be downloaded via their website: <http://soils.usda.gov>

FEMA Flood Hazards

All FEMA Flood Hazard data layers were created and are maintained by the Federal Emergency Management Agency (FEMA).: <http://www.fema.gov/hazard/flood>

2007 Contours

Line layer depicting 2 foot contour elevations derived from the 2007 Orthophotography Digital Terrain Model created by VGIN. Link to the layer provided below
[Contours](#)

Census Tracts

All census data layers were created and are maintained by the U.S. Census Bureau. Data can be downloaded via their website: <http://www.census.gov>

Spot Elevations

Point layer displaying spot elevation derived from the 2007 Orthophotography Digital Terrain Model.

These layers can also be found on JCC's Open Data Site link provided below
[JCC Open Data Site](#)